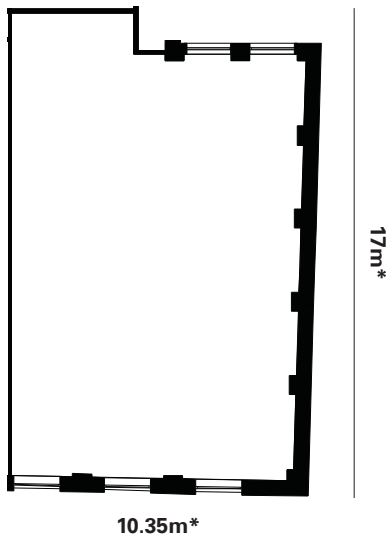


# Unit 233 Tea Factory - Available to let

urbansplash



This mid size unit offers a wealth of original features such as steel columns and exposed brickwork.



\*Maximum dimensions

**0333 666 0000**  
**commercial@urbansplash.co.uk**  
**www.urbansplash.co.uk/tea-factory**

DISCLAIMER: Urban Splash and Agents acting on their behalf give notice that:  
1. These particulars are produced in good faith, are set out as a general guide only and do not constitute part of a contract, 2. No person in the employment of Urban Splash or their Agents has any authority to make or give any representation or warranty in relation to this property, 3. Unless otherwise stated all prices and rents are quoted exclusive of VAT, 4. Date of publication April 2009

<b>Address</b>	82 Wood Street Liverpool L1 4DQY
<b>Use</b>	Office
<b>Size</b>	1,765 sq ft (164 sq m)
<b>TO RENT</b>	<b>£1,470 pcm</b> <b>£17,650 pa</b>
<b>Notes</b>	- Service charge £3.90 per sq ft - Insurance and heating included in service charge - Leasehold
<b>Contact</b>	Lynn Haime
<b>Telephone</b>	0333 666 0000
<b>Email</b>	lynnhaime@urbansplash.co.uk
<b>Agent</b>	Hitchcock Wright & Partners (Neil Kirkham)
<b>Telephone</b>	0151 227 3400
<b>Email</b>	neilkirkham@hwandp.co.uk