





Wellington Buildings is a landmark building situated in an unrivalled position on The Strand with commanding views over a world heritage site and The Mersey Estuary beyond.



### Location

Wellington Buildings is situated in a prominent position on The Strand in the main commercial core of Liverpool. The Building faces the waterfront and the famous 'Three Graces' and Albert Dock.

### Specification

- Attractive contemporary reception
- 2 passenger lifts
- Breathtaking views with riverside aspect
- Fully DDA compliant

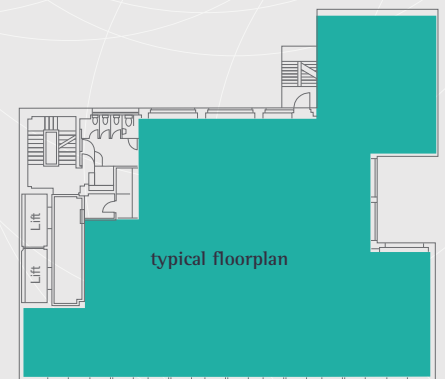


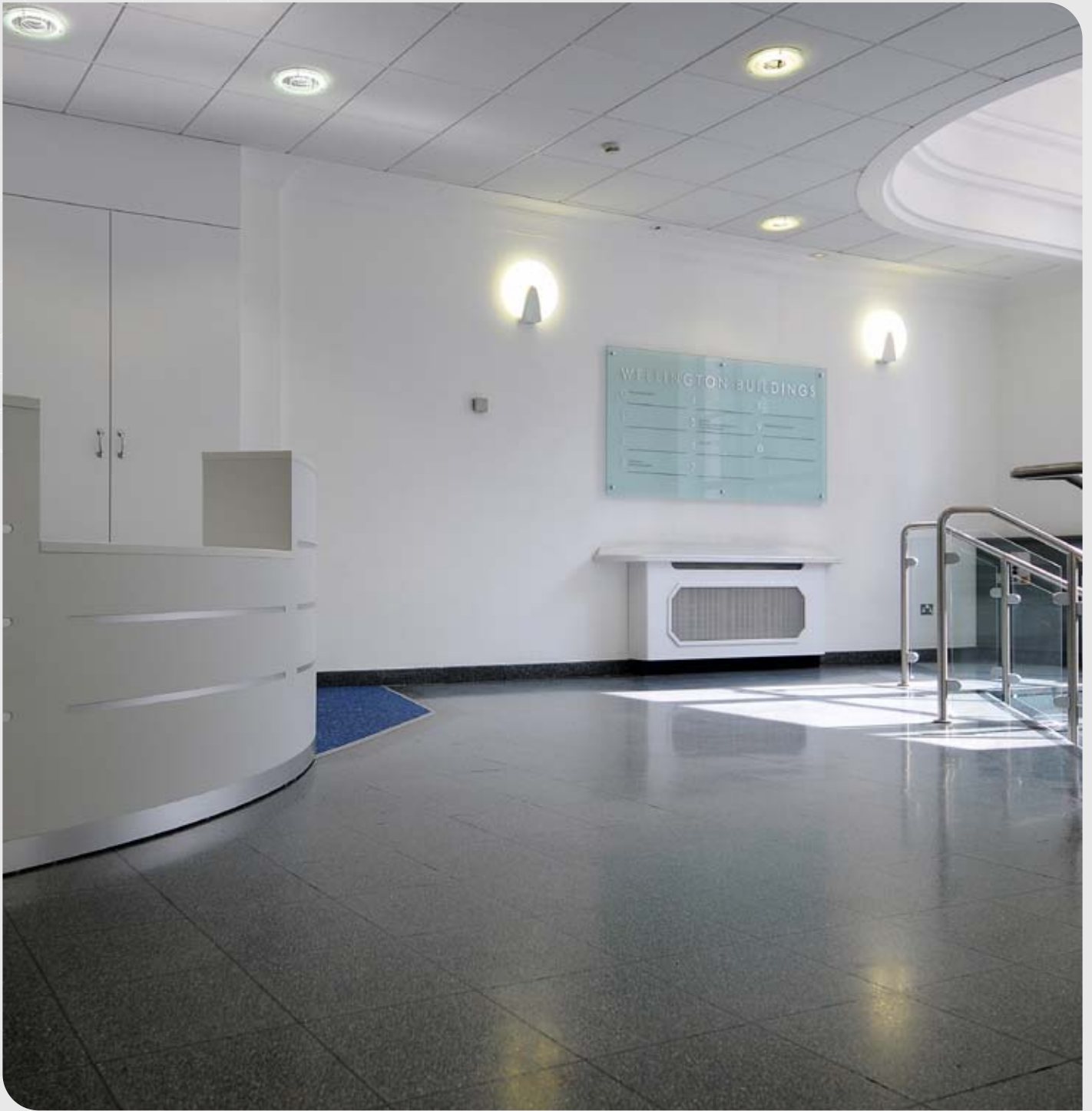
### Description

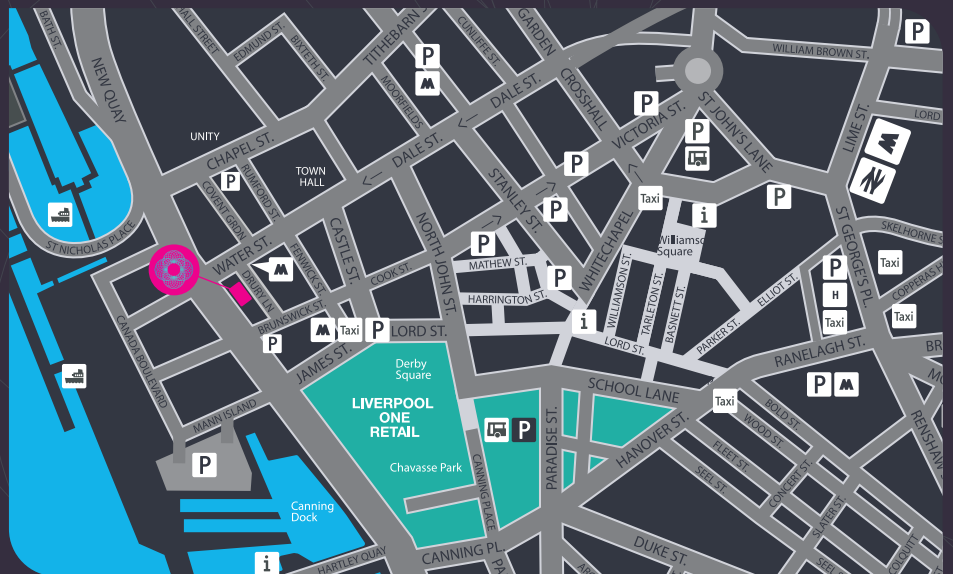
Wellington Buildings comprises over 55,000 sq ft (5,110 sq m) arranged over basement, ground and 10 upper floors. The building provides attractive flexible accommodation.

### Terms

Flexible short term leases are available from 12 months. Further details upon request.







 wellington buildings

For further details please contact:

mark.worthington@cbre.co.uk  
Darren.Hill2@cbre.com

brianricketts@hwapd.co.uk

**CBRE**  
CB RICHARD ELLIS  
**0151 224 7666**  
www.cbre.co.uk

**Hitchcock Wright & Partners**  
CHARTERED SURVEYORS  
**0151 227 3400**  
www.hitchcockwright.co.uk

SUITE	SIZE sq ft	SIZE m <sup>2</sup>	RENT Per sq ft	RENT Total	STATUS
2 <sup>nd</sup> floor	4,850	450.61	£9.50	£46,079	Available
4 <sup>th</sup> floor	4,823	448.14	£9.50	£45,826	Available
7 <sup>th</sup> floor	799.55	74.28	£9.50	£7,595	Available
7 <sup>th</sup> floor	155	14.40	£9.50	£1,475	Available
7 <sup>th</sup> floor	142.30	13.22	£9.50	£1,351	Available
7 <sup>th</sup> floor	870.67	80.89	£9.50	£8,271	Available
7 <sup>th</sup> floor	1,013	94.13	£9.50	£9,625	Available
7 <sup>th</sup> floor	1,304	121.22	£9.50	£12,395	Available
10 <sup>th</sup> floor	1,773	164.75	£9.50	£16,847	Available
10 <sup>th</sup> floor	348	32.40	£9.50	£3,313	Available
10 <sup>th</sup> floor	315.50	29.31	£9.50	£2,997	Available