

# Hitchcock Wright & Partners

## OFFICE LIST

### JANUARY 2019



|                            |  |  |              |           |
|----------------------------|--|--|--------------|-----------|
|                            | 57-59 Albert Road, Widnes, WA8 6JS                                       |  |              |           |
|                            |  | Asking Rent                                | Asking Price | Tenure    |
| Contact:<br>Matt Kerrigan  | First Floor Offices - 664 sqft   | £4,400 per annum                           | Not for sale | Leasehold |
|                            | 23 Argyle Street, Liverpool, L1 5BL                                      |  |              |           |
|                            |  | Asking Rent                                | Asking Price | Tenure    |
| Contact:<br>Brian Ricketts | Ground Floor - 1,543 sqft<br>Basement - 1,542 sqft<br>Total - 3,086 sqft | £32,000 per annum                          | Not for sale | Leasehold |
|                            | The Brewery Works, Cains Brewery Village, Liverpool, L8 5RE              |  |              |           |
|                            |  | Asking Rent                                | Asking Price | Tenure    |
| Contact:<br>Matt Kerrigan  | Studio 5 - 323 sqft<br>Studio H - 468 sqft                               | 5 - £500 per month<br>H - £1,000 per month | Not for sale | Leasehold |
|                            | South Harrington, Brunswick Business Park, Sefton Street, Liverpool      |  |              |           |
|                            |  | Asking Rent                                | Asking Price | Tenure    |
| Contact:<br>Brian Ricketts | Suite 1:01 - 1956 sqft   | £11.50 per sqft                            | Not for sale | Leasehold |



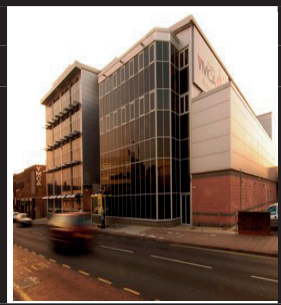
Contact:  
Brian Ricketts

| 43 Castle Street, Liverpool, L2 9SH |                 |              |           |
|-------------------------------------|-----------------|--------------|-----------|
|                                     | Asking Rent     | Asking Price | Tenure    |
| 6th Floor Office - 2916 sqft        | £13.50 per sqft | Not for sale | Leasehold |



Contact:  
Nick Harrop

| Bechers House, Charnock Road, Aintree, L9 7ET |                   |              |                      |
|---|-------------------|--------------|----------------------|
|   | Asking Rent       | Asking Price | Tenure               |
| Ground Floor - 5055 sqft                      | £21,000 per annum | £195,000     | Leasehold / Freehold |



Contact:  
Brian Ricketts

| The Beacon, College Street, St Helens |                |              |           |
|---------------------------------------|----------------|--------------|-----------|
|                                       | Asking Rent    | Asking Price | Tenure    |
| 1st Floor Office - 3,020 sqft         | £7.50 per sqft | N/A          | Leasehold |



Contact:  
Brian Ricketts

| The Department, Renshaw Street, Liverpool               |                 |              |           |
|---|-----------------|--------------|-----------|
|   | Asking Rent     | Asking Price | Tenure    |
| First Floor - 17,610 sqft<br>Second Floor - 17,750 sqft | £14.50 per sqft | Not for sale | Leasehold |



Contact:  
Brian Ricketts

| Merchants Court, Derby Square, Liverpool |                 |              |           |
|--|-----------------|--------------|-----------|
|  | Asking Rent     | Asking Price | Tenure    |
| Circa 6,766 sqft<br>(may split)          | £16.50 per sqft | Not for sale | Leasehold |



Contact:  
Brian Ricketts

|   |                |              |           |
|---|----------------|--------------|-----------|
| Dominick House, St Albans Road, Wallasey, CH44 5XH  |                |              |           |
|   | Asking Rent    | Asking Price | Tenure    |
| Ground Floor - 5,758 sqft<br>First Floor - 6,096 sqft<br>Second Floor - 5,851 sqft<br>Third Floor - 5,139 sqft<br>Fourth Floor - 5,499 sqft | £6.50 per sqft | Not for sale | Leasehold |



Contact:  
Brian Ricketts

|  |             |              |        |             |                 |              |           |
|--|-------------|--------------|--------|-------------|-----------------|--------------|-----------|
| 10 Duke Street, Liverpool, L1 5AS  |             |              |        |             |                 |              |           |
|  | Asking Rent | Asking Price | Tenure |             |                 |              |           |
| <table border="1"> <tr> <td>Ground</td> <td>3,150 sq ft</td> </tr> <tr> <td>First</td> <td>1,350 sq ft</td> </tr> </table> | Ground      | 3,150 sq ft  | First  | 1,350 sq ft | £14.50 per sqft | Not for Sale | Leasehold |
| Ground   | 3,150 sq ft |              |        |             |                 |              |           |
| First  | 1,350 sq ft |              |        |             |                 |              |           |



Contact:  
Brian Ricketts

|   |                               |              |           |
|---|-------------------------------|--------------|-----------|
| Stonecross Place, East Lancs Road, Haydock    |                               |              |           |
|   | Asking Rent                   | Asking Price | Tenure    |
| Suite 2b - 1800 sqft<br>Suite 13a - 1534 sqft | Rents from<br>£13.00 per sqft | Not for sale | Leasehold |



Contact:  
Brian Ricketts

|  |             |              |        |            |                 |              |           |
|--|-------------|--------------|--------|------------|-----------------|--------------|-----------|
| Helix, Edmund Street, Liverpool 3  |             |              |        |            |                 |              |           |
|  | Asking Rent | Asking Price | Tenure |            |                 |              |           |
| <table border="1"> <tr> <td>Second A</td> <td>3315 sq ft</td> </tr> <tr> <td>Third</td> <td>4530 sq ft</td> </tr> </table> | Second A    | 3315 sq ft   | Third  | 4530 sq ft | £12.50 per sqft | Not for Sale | Leasehold |
| Second A   | 3315 sq ft  |              |        |            |                 |              |           |
| Third  | 4530 sq ft  |              |        |            |                 |              |           |



Contact:  
Brian Ricketts

|   |             |              |          |          |          |          |                 |              |           |
|---|-------------|--------------|----------|----------|----------|----------|-----------------|--------------|-----------|
| HoneyComb, Edmund Street, Liverpool 3   |             |              |          |          |          |          |                 |              |           |
|   | Asking Rent | Asking Price | Tenure   |          |          |          |                 |              |           |
| <table border="1"> <tr> <td>Ground B</td> <td>2334 sqft</td> </tr> <tr> <td>Second A</td> <td>749 sqft</td> </tr> <tr> <td>Second B</td> <td>741 sqft</td> </tr> </table> | Ground B    | 2334 sqft    | Second A | 749 sqft | Second B | 741 sqft | £12.50 per sqft | Not for Sale | Leasehold |
| Ground B  | 2334 sqft   |              |          |          |          |          |                 |              |           |
| Second A  | 749 sqft    |              |          |          |          |          |                 |              |           |
| Second B  | 741 sqft    |              |          |          |          |          |                 |              |           |



Contact:  
Brian Ricketts

| 17 Hatton Gardens, Liverpool, L3 2FE |                   |              |           |
|--------------------------------------|-------------------|--------------|-----------|
|                                      | Asking Rent       | Asking Price | Tenure    |
| First Floor 1,036 sqft               | £10,500 per annum | Not for sale | Leasehold |



Contact:  
Brian Ricketts

| 19 Hatton Gardens, Liverpool, L3 2FE |                   |              |           |
|--------------------------------------|-------------------|--------------|-----------|
|                                      | Asking Rent       | Asking Price | Tenure    |
| First Floor 1,542 sqft               | £16,500 per annum | Not for sale | Leasehold |



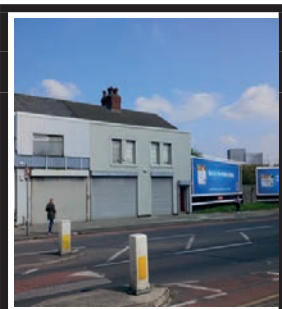
Contact:  
Brian Ricketts

| Vanilla Factory, Fleet Street, Liverpool  |                      |              |           |
|---|----------------------|--------------|-----------|
|   | Asking Rent          | Asking Price | Tenure    |
| Suite G1 - 790 sqft<br>Suite 202 - 1,507 sqft<br>Suite 208 - 1,289 sqft<br>Suite 210 - 287 sqft<br>Suite 300 - 2,637 sqft<br>Suite 308 - 377 sqft | From £11.00 per sqft | Not for sale | Leasehold |




Contact:  
Brian Ricketts

| Crown Buildings, Kinglake Street, Liverpool, L7 3PF                            |                |                |                        |
|--|----------------|----------------|------------------------|
|  | Asking Rent    | Asking Price   | Tenure                 |
| Ground Floor - 12,376 sqft<br>First Floor - 12,252 sqft<br>Total - 24,628 sqft | Let considered | Guide £650,000 | Freehold/<br>Leasehold |





Contact:  
Sean Collins-Jones

| 221-223 Knowsley Road, Bootle L20 |                   |              |           |
|-----------------------------------|-------------------|--------------|-----------|
|                                   | Asking Rent       | Asking Price | Tenure    |
| 1,321 sqft                        | £14,000 per annum | Not for sale | Leasehold |

|   |  |                 |              |           |
|---|--|-----------------|--------------|-----------|
|  | Meridian Business Village, Hansby Drive, Speke, Liverpool, L24 9LG |                 |              |           |
|   |  | Asking Rent     | Asking Price | Tenure    |
| Contact:<br>Brian Ricketts  | Unit 17 - 1,384 - 2,695 sqft<br>Unit 25 - 1,384 - 2,695 sqft       | £12.00 per sqft | Not for sale | Leasehold |


|                            |  |                 |                  |                      |
|----------------------------|--|-----------------|------------------|----------------------|
|                            | Gateway House, Wirral International Business Park, New Chester Road, Bromborough |                 |                  |                      |
|                            |  | Asking Rent     | Asking Price     | Tenure               |
| Contact:<br>Brian Ricketts | Ground Floor - 2249 sqft<br>First Floor - 3.012 sqft<br>Third Floor - 2847 sqft  | £10.00 per sqft | Upon Application | Leasehold / Freehold |

|  |   |                   |              |           |
|--|---|-------------------|--------------|-----------|
|  | 18 Tipton Way, Wavertree Business Village |                   |              |           |
|  |   | Asking Rent       | Asking Price | Tenure    |
| Contact:<br>Sean Collins-Jones   | 1,603 sqft                                | £15,000 per annum | Not for sale | Leasehold |


|   |   |   |              |           |
|---|---|---|--------------|-----------|
|  | The Technology Centre, Inward way, Rossmore Business Park, Ellesmere Port   |   |              |           |
|   |   | Asking Rent   | Asking Price | Tenure    |
| Contact:<br>Brian Ricketts  | Unit 3                    583 sqft<br>Unit 6                    1036 sqft<br>Unit 7                    844 sqft<br>Unit 8                    1471 sqft<br>Unit 9                    627 sqft<br>Unit 11                   1254 sq ft<br>Unit 13                   1500 sq ft<br>Unit 14                   1,542 sq ft<br>Unit 17                   446 sq ft<br>Unit 19                   1,179 sq ft<br>Unit 20                   1881 sq ft | Rents of £12 per sqft<br><b>**ALL INC<br/>MONTHLY RENTS**</b><br>(inc rent, electricity,<br>service charge, water<br>buildings insurance) | Not for sale | Leasehold |




|   |   |             |                           |          |
|---|---|-------------|---------------------------|----------|
|  | Block C Liberty Place, Tradewinds Square, Liverpool (inc Kent St) |             |                           |          |
|   |   | Asking Rent | Asking Price              | Tenure   |
| Contact:<br>Brian Ricketts  | Commercial Total - 6,741 sqft                                     | N/A         | In the region on £700,000 | Freehold |

|   |                                       |                   |              |           |
|---|---------------------------------------|-------------------|--------------|-----------|
|  | 3-5 Trueman Street, Liverpool, L3 2BA |                   |              |           |
|   |                                       | Asking Rent       | Asking Price | Tenure    |
| Contact:<br>Brian Ricketts  | Total - 2,123 sqft                    | £10,400 per annum | Not for sale | Leasehold |

|                            |  |                  |              |           |
|----------------------------|--|------------------|--------------|-----------|
| <b>PHOTO NOT AVAILABLE</b> | 29a/30a Marian Square, Netherton, Merseyside L30 5QA |                  |              |           |
|                            |  | Asking Rent      | Asking Price | Tenure    |
| Contact:<br>Brian Ricketts | 1st Floor - 1600 sqft                                | £5,500 per annum | Not for Sale | Leasehold |

|   |   |             |              |           |
|---|---|-------------|--------------|-----------|
|  | 77 Market Street, Hoylake, Wirral, CH47 2BH |             |              |           |
|   |   | Asking Rent | Asking Price | Tenure    |
| Contact:<br>Matt Kerrigan   | 1,632 sqft                                  | £18,000     | Not for sale | Leasehold |

|   |   |             |                 |           |
|---|---|-------------|-----------------|-----------|
|  | Centric House, Moorfields, Liverpool L2 2RU |             |                 |           |
|   |   | Asking Rent | Asking Price    | Tenure    |
|   | Basement                                    | 127 sqft    | £16.50 per sqft | Leasehold |
|   | Ground Floor                                | 2511 sqft   |                 |           |
|   | First Floor                                 | 5655 sqft   |                 |           |
|   | Second Floor                                | 5655 sqft   |                 |           |
|   | Third Floor                                 | 5655 sqft   |                 |           |
| Fourth Floor  | 5655 sqft                                   |             |                 |           |
| Contact:<br>Brian Ricketts  |   |             |                 |           |