





Hitchcock Wright & Partners

OFFICE LIST

JANUARY 2020



Hitchcock Wright & Partners
CHARTERED SURVEYORS &
0151 227 3400
www.hitchcockwright.co.uk

	57-59 Albert Road, Widnes, WA8 6JS			
		Asking Rent	Asking Price	Tenure
Contact: Matt Kerrigan	First Floor Offices - 664 sqft	£4,400 per annum	Not for sale	Leasehold
	23 Argyle Street, Liverpool, L1 5BL			
		Asking Rent	Asking Price	Tenure
Contact: Brian Ricketts	Ground Floor - 1,543 sqft Basement - 1,542 sqft Total - 3,086 sqft	£32,000 per annum	Not for sale	Leasehold
	The Brewery Works, Cains Brewery Village, Liverpool, L8 5RE			
		Asking Rent	Asking Price	Tenure
Contact: Matt Kerrigan	Studio 5 - 323 sqft Studio H - 468 sqft	5 - £500 per month H - £1,000 per month	Not for sale	Leasehold
	South Harrington, Brunswick Business Park, Sefton Street, Liverpool			
		Asking Rent	Asking Price	Tenure
Contact: Brian Ricketts	Suite 1:01 - 1956 sqft	£11.50 per sqft	Not for sale	Leasehold



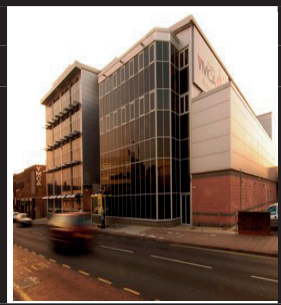
Contact:
Brian Ricketts

43 Castle Street, Liverpool, L2 9SH			
	Asking Rent	Asking Price	Tenure
6th Floor Office - 2916 sqft	£13.50 per sqft	Not for sale	Leasehold



Contact:
Nick Harrop

Bechers House, Charnock Road, Aintree, L9 7ET			
	Asking Rent	Asking Price	Tenure
Ground Floor - 5055 sqft	£21,000 per annum	£195,000	Leasehold / Freehold



Contact:
Brian Ricketts

The Beacon, College Street, St Helens			
	Asking Rent	Asking Price	Tenure
1st Floor Office - 3,020 sqft	£7.50 per sqft	N/A	Leasehold



Contact:
Brian Ricketts

The Department, Renshaw Street, Liverpool			
	Asking Rent	Asking Price	Tenure
First Floor - 17,610 sqft Second Floor - 17,750 sqft	£14.50 per sqft	Not for sale	Leasehold



Contact:
Brian Ricketts

Merchants Court, Derby Square, Liverpool			
	Asking Rent	Asking Price	Tenure
Circa 6,766 sqft (may split)	£16.50 per sqft	Not for sale	Leasehold



Contact:
Brian Ricketts

Dominick House, St Albans Road, Wallasey, CH44 5XH			
	Asking Rent	Asking Price	Tenure
Ground Floor - 5,758 sqft First Floor - 6,096 sqft Second Floor - 5,851 sqft Third Floor - 5,139 sqft Fourth Floor - 5,499 sqft	£6.50 per sqft	Not for sale	Leasehold



Contact:
Brian Ricketts

10 Duke Street, Liverpool, L1 5AS							
	Asking Rent	Asking Price	Tenure				
<table border="1"> <tr> <td>Ground</td> <td>3,150 sq ft</td> </tr> <tr> <td>First</td> <td>1,350 sq ft</td> </tr> </table>	Ground	3,150 sq ft	First	1,350 sq ft	£14.50 per sqft	Not for Sale	Leasehold
Ground	3,150 sq ft						
First	1,350 sq ft						



Contact:
Brian Ricketts

Stonecross Place, East Lancs Road, Haydock			
	Asking Rent	Asking Price	Tenure
Suite 2b - 1800 sqft Suite 13a - 1534 sqft	Rents from £13.00 per sqft	Not for sale	Leasehold



Contact:
Brian Ricketts

Helix, Edmund Street, Liverpool 3							
	Asking Rent	Asking Price	Tenure				
<table border="1"> <tr> <td>Second A</td> <td>3315 sq ft</td> </tr> <tr> <td>Third</td> <td>4530 sq ft</td> </tr> </table>	Second A	3315 sq ft	Third	4530 sq ft	£12.50 per sqft	Not for Sale	Leasehold
Second A	3315 sq ft						
Third	4530 sq ft						



Contact:
Brian Ricketts

HoneyComb, Edmund Street, Liverpool 3									
	Asking Rent	Asking Price	Tenure						
<table border="1"> <tr> <td>Ground B</td> <td>2334 sqft</td> </tr> <tr> <td>Second A</td> <td>749 sqft</td> </tr> <tr> <td>Second B</td> <td>741 sqft</td> </tr> </table>	Ground B	2334 sqft	Second A	749 sqft	Second B	741 sqft	£12.50 per sqft	Not for Sale	Leasehold
Ground B	2334 sqft								
Second A	749 sqft								
Second B	741 sqft								



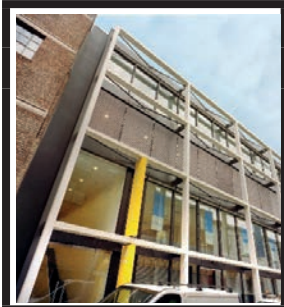
Contact:
John Barker

Unit 6, Glenn Buildings South, Moor Lane, Crosby, L23 2UN			
	Asking Rent	Asking Price	Tenure
Total - 2,261 sqft	£25,000 per annum	Not for sale	Leasehold



Contact:
Brian Ricketts

19 Hatton Gardens, Liverpool, L3 2FE			
	Asking Rent	Asking Price	Tenure
First Floor 1,542 sqft	£16,500 per annum	Not for sale	Leasehold



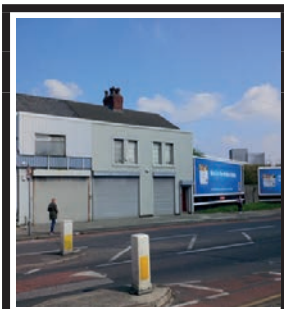
Contact:
Brian Ricketts

Vanilla Factory, Fleet Street, Liverpool			
	Asking Rent	Asking Price	Tenure
Suite G1 - 790 sqft Suite 202 - 1,507 sqft Suite 208 - 1,289 sqft Suite 210 - 287 sqft Suite 300 - 2,637 sqft Suite 308 - 377 sqft	From £11.00 per sqft	Not for sale	Leasehold



Contact:
Brian Ricketts

Crown Buildings, Kinglake Street, Liverpool, L7 3PF			
	Asking Rent	Asking Price	Tenure
Ground Floor - 12,376 sqft First Floor - 12,252 sqft Total - 24,628 sqft	Let considered	Guide £650,000	Freehold/ Leasehold



Contact:
Sean Collins-Jones

221-223 Knowsley Road, Bootle L20			
	Asking Rent	Asking Price	Tenure
1,321 sqft	£14,000 per annum	Not for sale	Leasehold



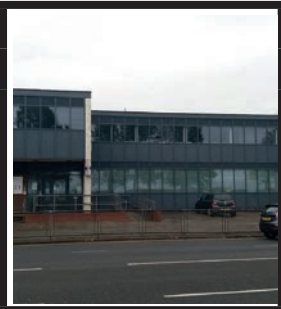
Contact:
Brian Ricketts

Meridian Business Village, Hansby Drive, Speke, Liverpool, L24 9LG			
	Asking Rent	Asking Price	Tenure
Unit 17 - 1,384 - 2,695 sqft Unit 25 - 1,384 - 2,695 sqft	£12.00 per sqft	Not for sale	Leasehold



Contact:
Brian Ricketts

Gateway House, Wirral International Business Park, New Chester Road, Bromborough			
	Asking Rent	Asking Price	Tenure
Ground Floor - 2249 sqft First Floor - 3,012 sqft Third Floor - 2847 sqft	£10.00 per sqft	Upon Application	Leasehold / Freehold




Contact:
Matt Kerrigan


142-148 Stanley Road, Kirkdale, L5 7QQ			
	Asking Rent	Asking Price	Tenure
2,415 sqft	£16,000 per annum	Not for sale	Leasehold



Contact:
Brian Ricketts

18 Tipton Way, Wavertree Business Village			
	Asking Rent	Asking Price	Tenure
1,603 sqft	£15,000 per annum	Not for sale	Leasehold

	The Technology Centre, Inward way, Rossmore Business Park, Ellesmere Port				
			Asking Rent	Asking Price	Tenure
	Unit 3	583 sqft	Rents of £12 per sqft **ALL INC MONTHLY RENTS** (inc rent, electricity, service charge, water buildings insurance)	Not for sale	Leasehold
	Unit 6	1036 sqft			
	Unit 7	844 sqft			
	Unit 8	1471 sqft			
	Unit 9	627 sqft			
	Unit 11	1254 sq ft			
	Unit 13	1500 sq ft			
	Unit 14	1,542 sq ft			
Unit 17	446 sq ft				
Unit 19	1,179 sq ft				
Unit 20	1881 sq ft				
Contact: Brian Ricketts					

	Block C Liberty Place, Tradewinds Square, Liverpool (inc Kent St)				
			Asking Rent	Asking Price	Tenure
	Commercial Total - 6,741 sqft		N/A	In the region on £700,000	Freehold
Contact: Brian Ricketts					


	3-5 Trueman Street, Liverpool, L3 2BA				
			Asking Rent	Asking Price	Tenure
	Total - 2,123 sqft		£10,400 per annum	Not for sale	Leasehold
Contact: Brian Ricketts					

PHOTO NOT AVAILABLE	29a/30a Marian Square, Netherton, Merseyside L30 5QA				
			Asking Rent	Asking Price	Tenure
	1st Floor - 1600 sqft		£5,500 per annum	Not for Sale	Leasehold
Contact: Brian Ricketts					