

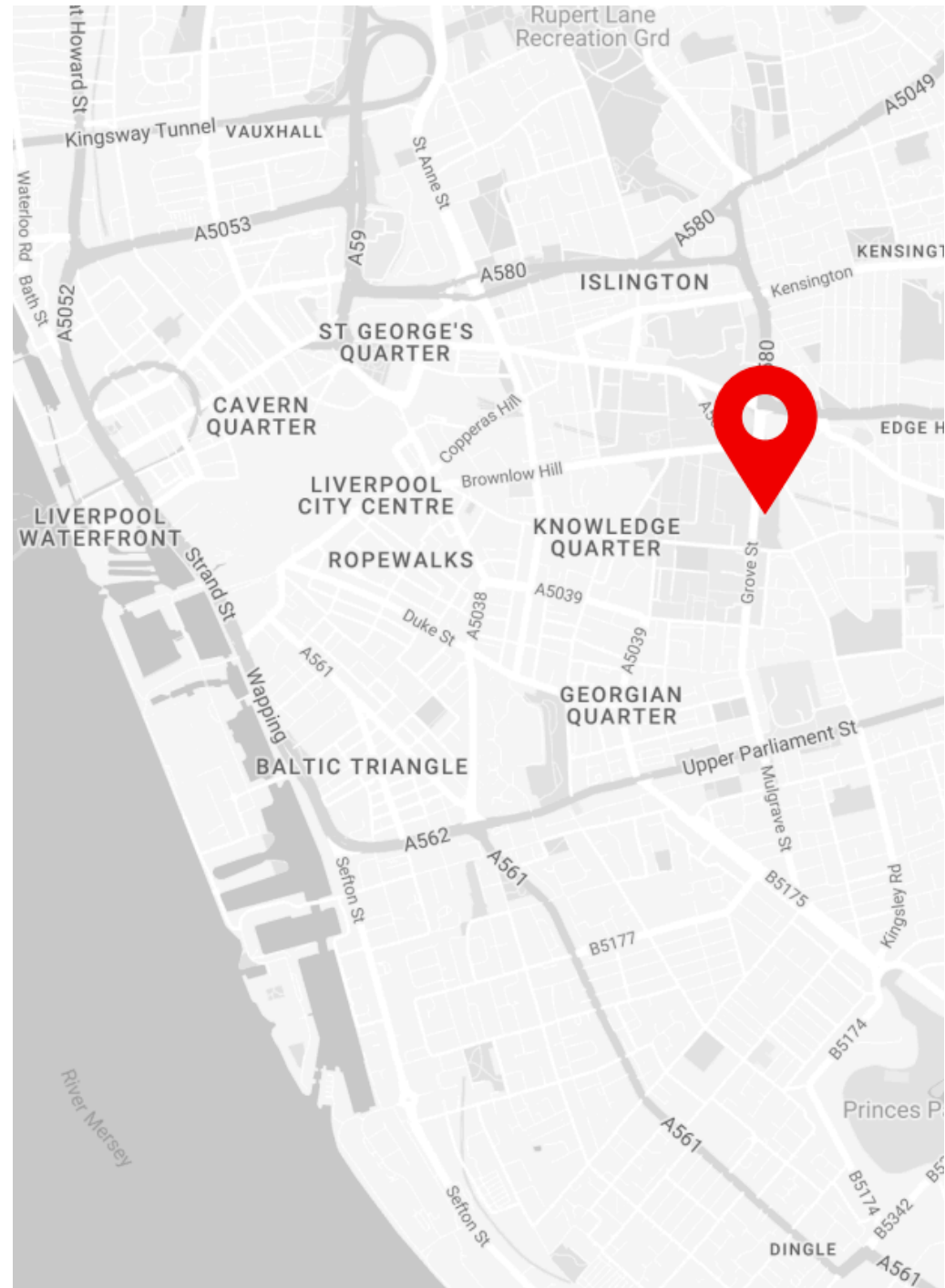


# Smithdown Court



# Situated in the heart of Liverpool's thriving Knowledge Quarter

Smithdown Court is located within Paddington Village in Liverpool's Knowledge Quarter. Next to the historical Williamson Tunnels and the Royal College of Physicians, Smithdown Court is perfectly located for students and those visiting Liverpool.



# Welcome to the Knowledge Quarter

Smithdown Court sits at the heart of Liverpool's Knowledge Quarter, a 450-acre Innovation District.

The Knowledge Quarter is home to some of the world's most influential players in science, health, technology, education, music and the creative and performing arts.

Each year, the area is home to 60,000 students, offering unrivalled rental opportunities.

Unilever bases itself in Liverpool, which undoubtedly attracts many young professionals to the city.

However, The Knowledge Quarter promises the most significant transformation in a generation, with a potential development value of £2.2 billion.

## HOME TO...

The Spine



Liverpool Science Park



Accelerator



Sensor City

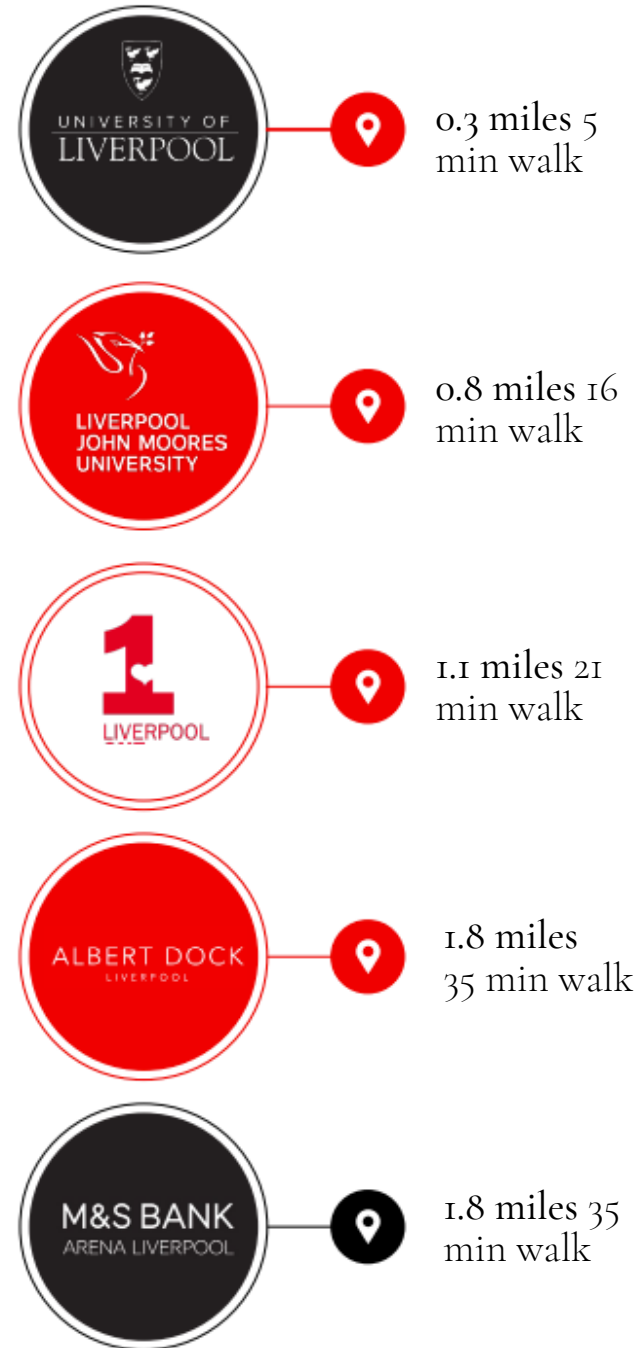


Materials Innovation Factory



# Walking distance from iconic institutions and top attractions

Smithdown Court benefits from an excellent location and is only a short walk away from Liverpool City Centre, including Liverpool Lime Street and Liverpool One.



# Liverpool public transport



## Bus

Liverpool has an extensive bus network, which is a handy way to get to the airport and destinations throughout the city. Apart from taking a tour, the bus is the best way to get to many of the Beatles' sites like Penny Lane and Strawberry Field.



## Ferry

Mersey Ferries, which sail between Liverpool and Birkenhead on the opposite side of the Mersey, have been famous ever since Gerry and the Pacemakers had their 1964 hit with Ferry Across the Mersey. The ferry costs £2.80 one-way or £3.70 return. Mersey Ferries also run a 50-minute river explorer cruise that costs £11 and they also run cruises up the Manchester Ship Canal to Salford Quays near Manchester.



## Train

The Merseyrail train network runs as far as Chester and Ellesmere Port and has underground stops at Central, James Street, Lime Street and Moorfields in the city centre and at Hamilton Square and Birkenhead Central in Birkenhead.

# Smithdown Court Highlights

01

Complex

10

Apartments

04

Floors

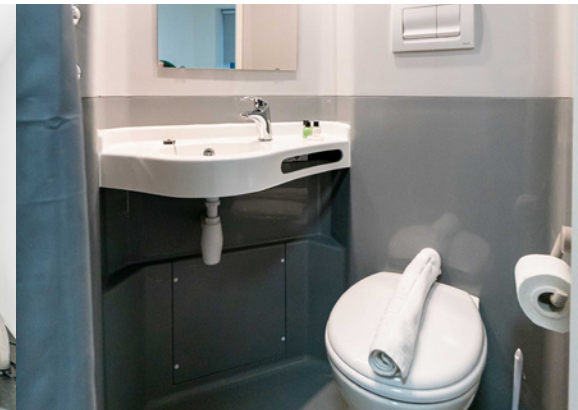
61

Rooms

12

Parking spaces

All apartments come with a fully fitted shared kitchen and living area.

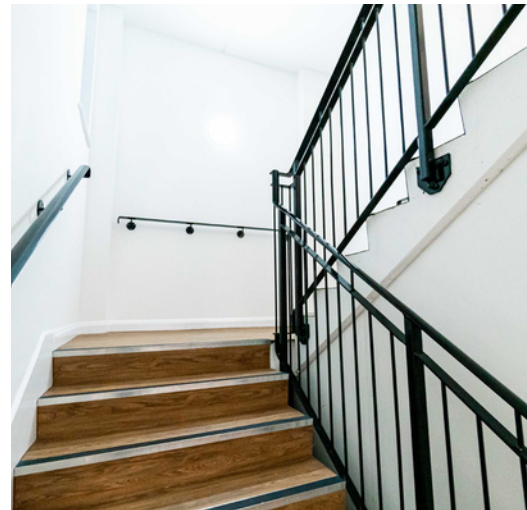


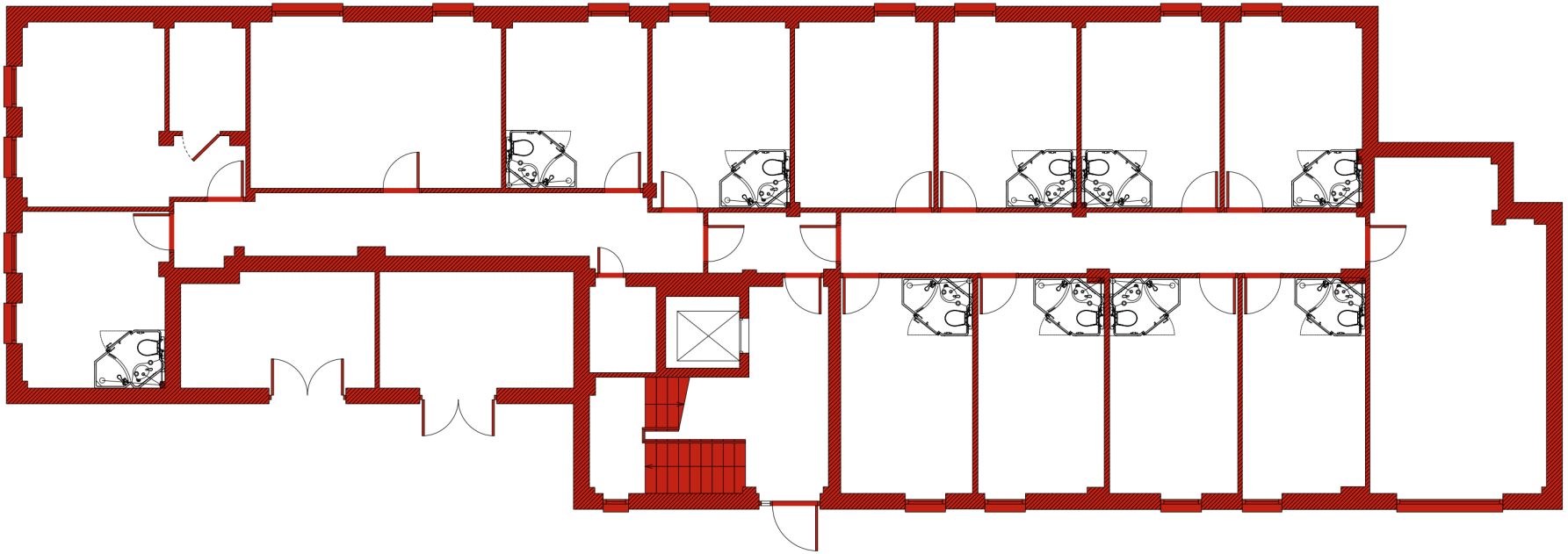
# THE APARTMENTS

- 1 x Three bed apartment
- 1 x Four bed apartment
- 3 x Six bed apartments
- 4 x Seven bed apartments
- 1 x Eight bed apartments

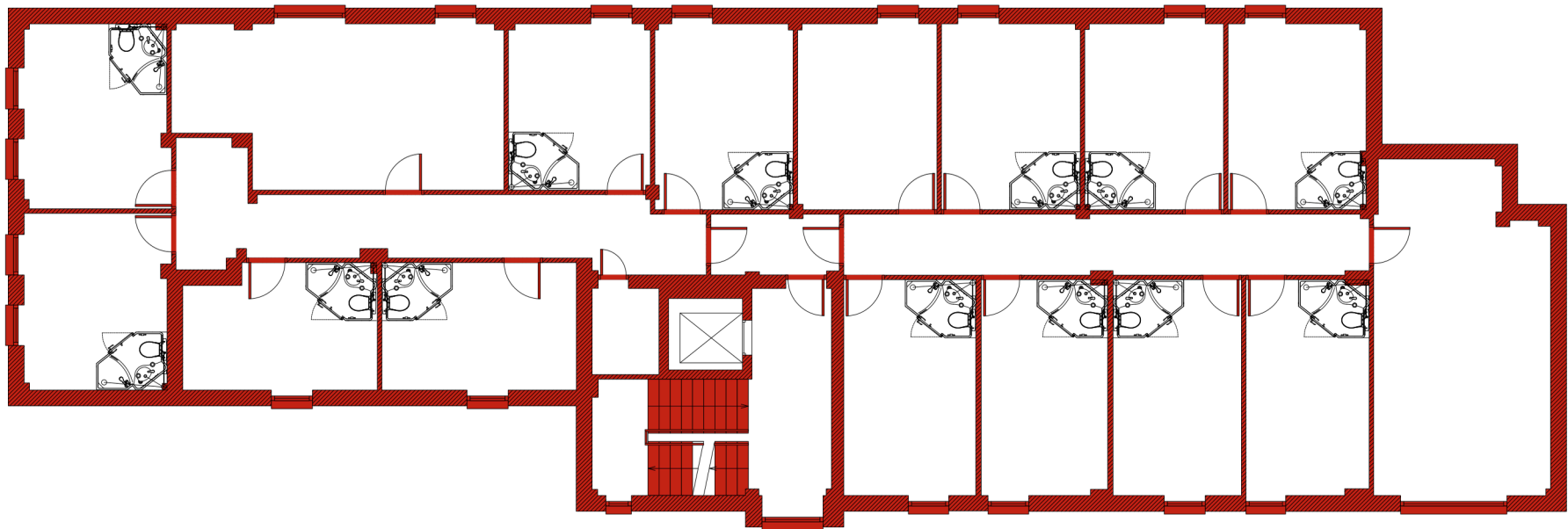
\*All include an en-suite bathroom

\*All have a shared living and kitchen space

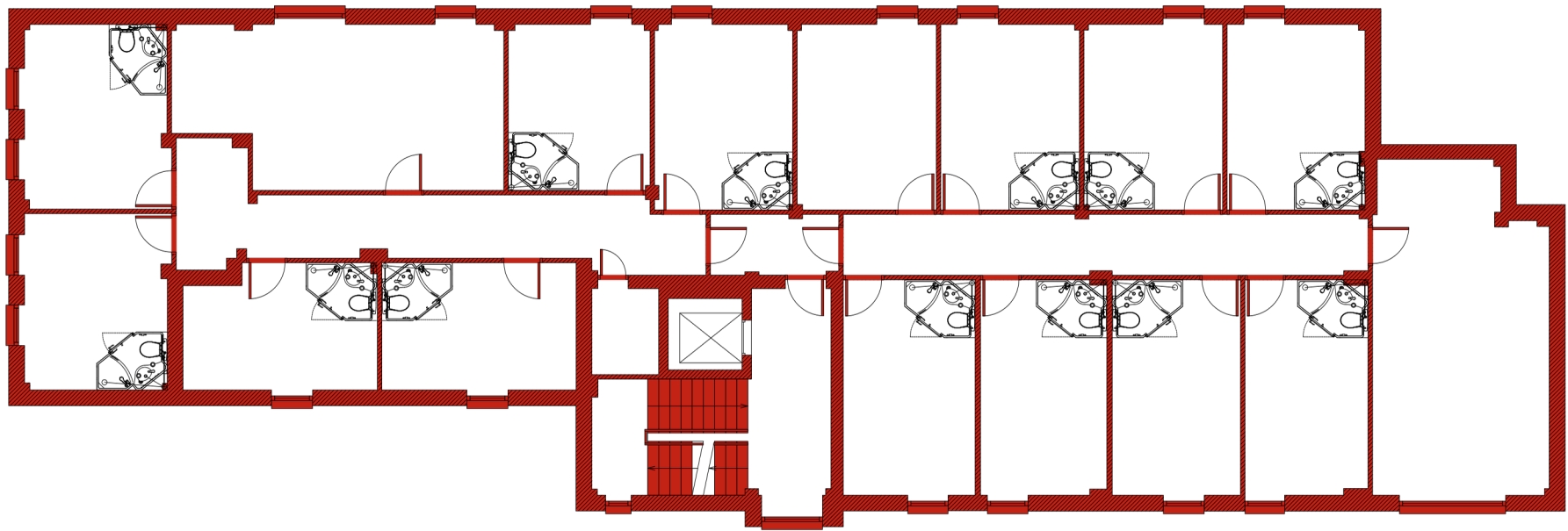




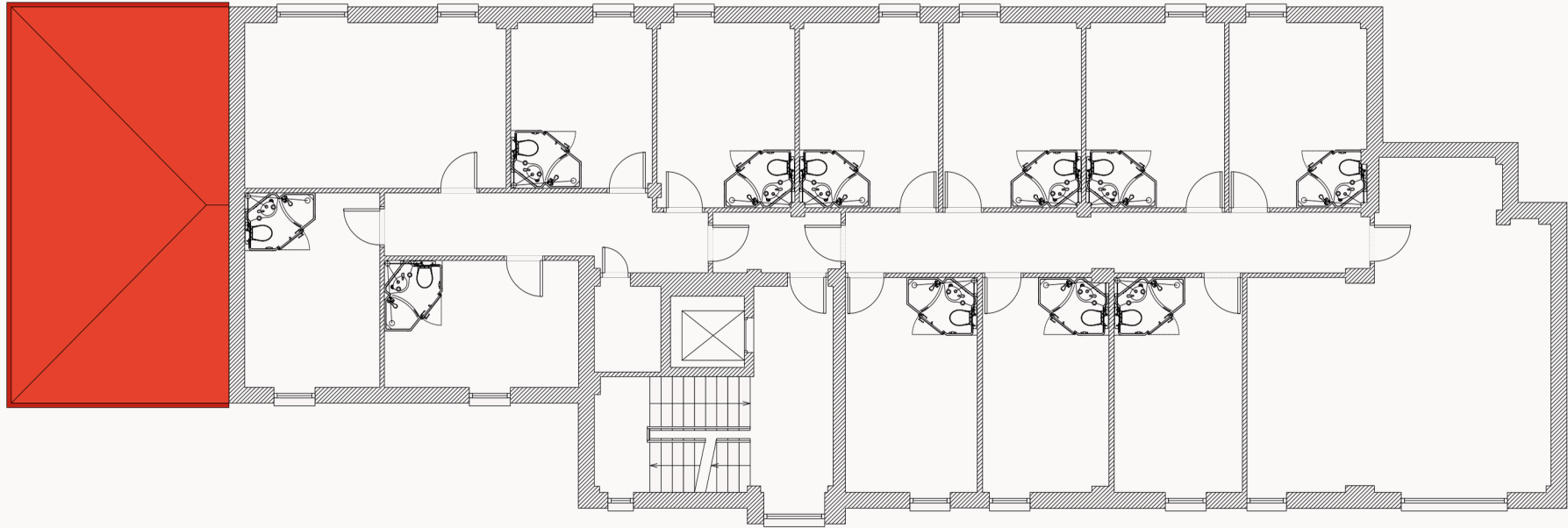
Ground floor plan



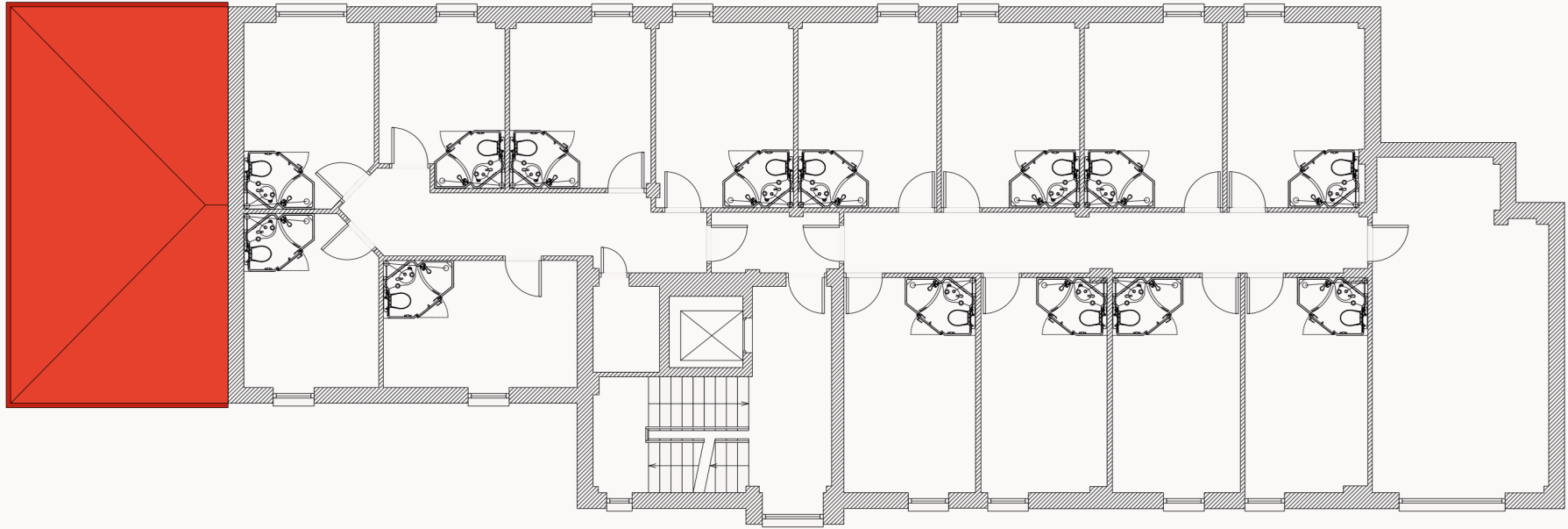
First floor plan



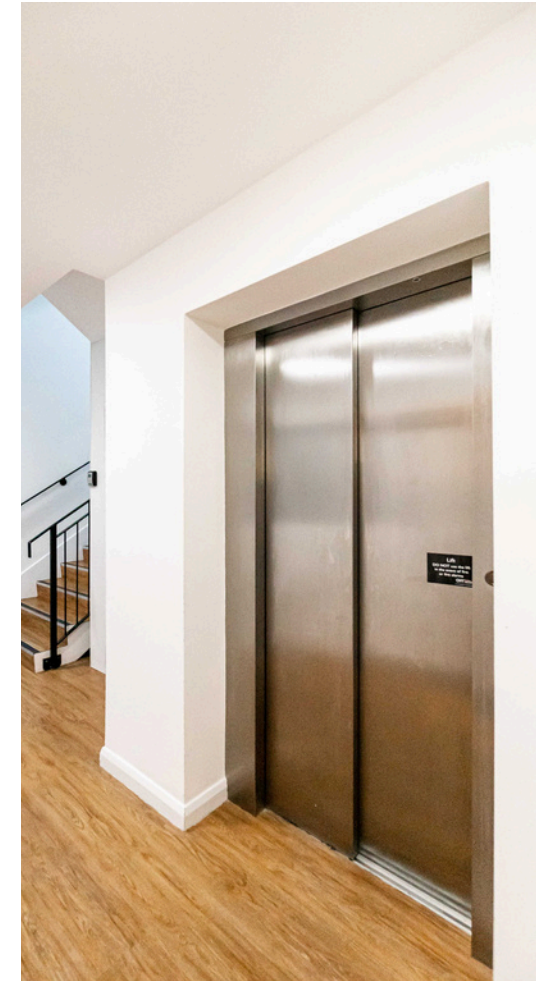
Second floor plan



Third floor plan



Fourth floor plan





# Smithdown Court



For more information, please contact  
[brianricketts@hwandp.co.uk](mailto:brianricketts@hwandp.co.uk)  
0151 227 3400 / 07970 837 454

**Hitchcock** **Wright**  
CHARTERED SURVEYORS **&** **Partners**