

TO LET



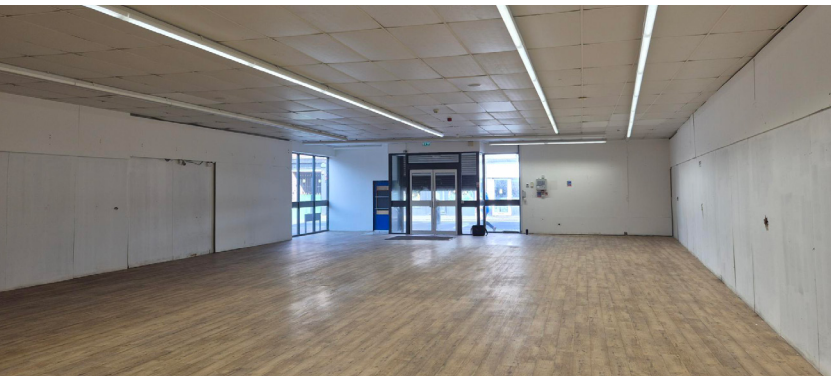
M

UNIT 10

The Row, Hoylake,
Merseyside,
CH47 3BB

Local Occupiers Include

The **co-operative**
funeralcare



DESCRIPTION

The property is prominently located fronting Market Street (A553). Hoylake is a popular seaside town on the Wirral Peninsula and is a desirable place to live given its coastal location together with easy access to the national rail and motoring network with travel time to Liverpool and Chester in under 30 minutes. Market Street benefits from a mix of national and local traders such as Co-op, Wetherspoons, Sainsbury's, Dominos, LA Hair, Shiftworks Co-working and several other retailers.

UNIT SIZE

Total Area: 5,600 sq.ft (520.3 sq.m)

RENT

£55,000 pax.

BUSINESS RATES

Est. £31,500

SERVICES

All mains services are available.

SERVICE CHARGE & INSURANCE

Service Charge: £8,539.96

Insurance: £1,228

ENERGY PERFORMANCE

EPC rating C. Further information available upon request.

PLANNING

Subject to planning. The property is classified as Use Class E. It is the incoming tenant's responsibility to verify that their intended use is acceptable to the Local Planning Authority.

LEGAL COSTS

Each party is responsible for their own legal costs in connection with the granting of a lease.



17

Retail Units On-Site



5,600 sq.ft

Total Unit Area



What Three Words
foremost.clashing.call

THE ROW

SITE PLAN

M

LCP.
part of M^{Core}



Harry Eades
07564 052326
hpe@evolveestates.com

Viewing
Strictly via prior appointment
with the appointed agents

Hitchcock Wright
CHARTERED SURVEYORS & PARTNERS
0151 227 3400
www.hitchcockwright.co.uk

Alana Finn
07799 623567
alanafinn@hwandp.co.uk

Matt Kerrigan
07970 837453
mattkerrigan@hwandp.co.uk

